



BEDCO Textile Factory Project– 10th Of Ramadan Exposed- Non Accessible Roof

Roofing System: Self-protected waterproofing membrane

The Polymer Modified Bitumen membrane "NiloPlast 5 PS" Mineral, by BituNil, is being installed on the 36,000 M2 Textile Factory roof. The roof slab is a precast hollow core slab, sloping towards a side concrete gutter.



BituNil Highlights Issue 02 Spring 2015



Nile Waterproofing Material Co. S.A.E

50, Al Khalifa Al Maamoun St. Roxy - Heliopolis, Cairo - Egypt, Tel : (202) 24511194 - 24511195 Fax: (202) 24511198

Plant: ASPPC Industrial complex - Merghem - Alexandria

Web Site: www.Bitunil.com

Email: bitunil@bitunil.com

ISSUE

02

Spring
2015

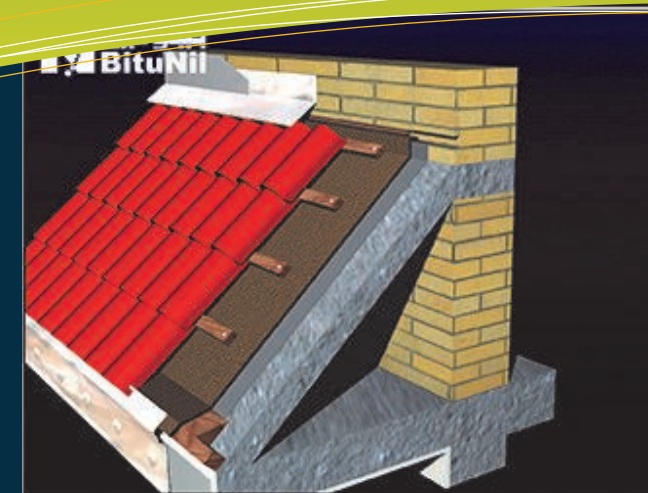
News From
Egypt Leading
Manufacturer
Of Bituminous Water-
proofing Membranes

BituNil Highlights

BituNil Underlayment Membrane



BASEFLEX SBS – F
BASEFLEX APP – F



this issue

BituNil Underlayment **P.1**

Seif Etoile Project **P.2**

MEDIBAT Tunisia 2015 **P.3**

BEDCO Factory Project **P.4**

Steep Slope Roof Systems & Underlayment



Underlayments perform several functions on a steep slope roof, under clay roof tiles, or roof shingles, such as:

- Weather protection until the roof covering is installed.
- A second weatherproofing barrier when moisture infiltrates the roof system.
- Separation between roof covering and substrate.

An underlayment is a critical system component in a clay roof tile systems, where tiles are designed for use as multi layered water-shedding roof components that rely on the slope of the roof substrate to effectively shed water. One of the NRCA Approved underlayment configurations is "Single layer of mechanically attached underlayment".

For such application, BituNil recommends its SBS or APP polymer modified bitumen underlayment membranes with fiberglass reinforcement

"BASEFLEX-SBS-F" 1.5mm, or "BASEFLEX-APP-F" 1.5mm

The underlayment is mechanically fastened to deck prior to the application of roof covering. "BASEFLEX" is lapped horizontally in shingle fashion with side laps min 5cm & end laps min 10cm. It is fastened with nails or staples which ever is appropriate for the roof's slope to hold the underlayment in place until the primary roof covering is installed. Some building codes may require specific fastener types and patterns for underlayment in high wind regions.



The Project:

SEIF ETOILE TOWER

A residential admin building in SMOUHA at the heart of Alexandria, occupying an area of 5000 M2 , owned and designed by SEIF For Urban Development



Case Study: Basement Water- proofing

SEIF ETOILE TOWER SMOUHA– Alexandria

As with most buildings in the coastal city of Alexandria, construction of large buildings require deep foundations. And due to high land value at such prime locations in the coastal city, a 10 story building with a basement was incorporated in the design.



The Basement:

With neighboring buildings very close by, the basement was formed using secant piling and was faced with shotcrete.

A non permanent brick wall was constructed around the perimeter to receive the vertical waterproofing system.

Basement waterproofing:

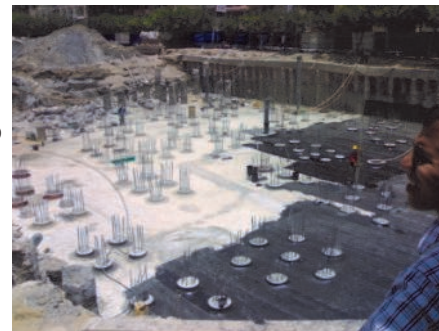
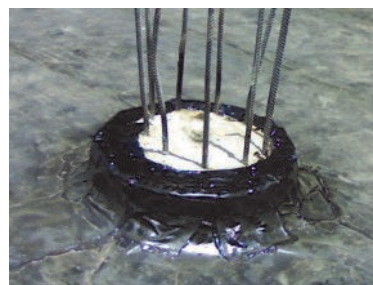
The appointed waterproof-

ing contractor, one of BituNil's certified applicators, implements a two layer modified bitumen membranes tanking system manufactured by BituNil. The **two layer SBS modified bitumen membrane BITUFLEX 4mm**, was applied to

horizontal blinding concrete underneath the raft foundation, and to the vertical walls.

The horizontal waterproofing system was protected with a sand cement screed, where as the vertical water-

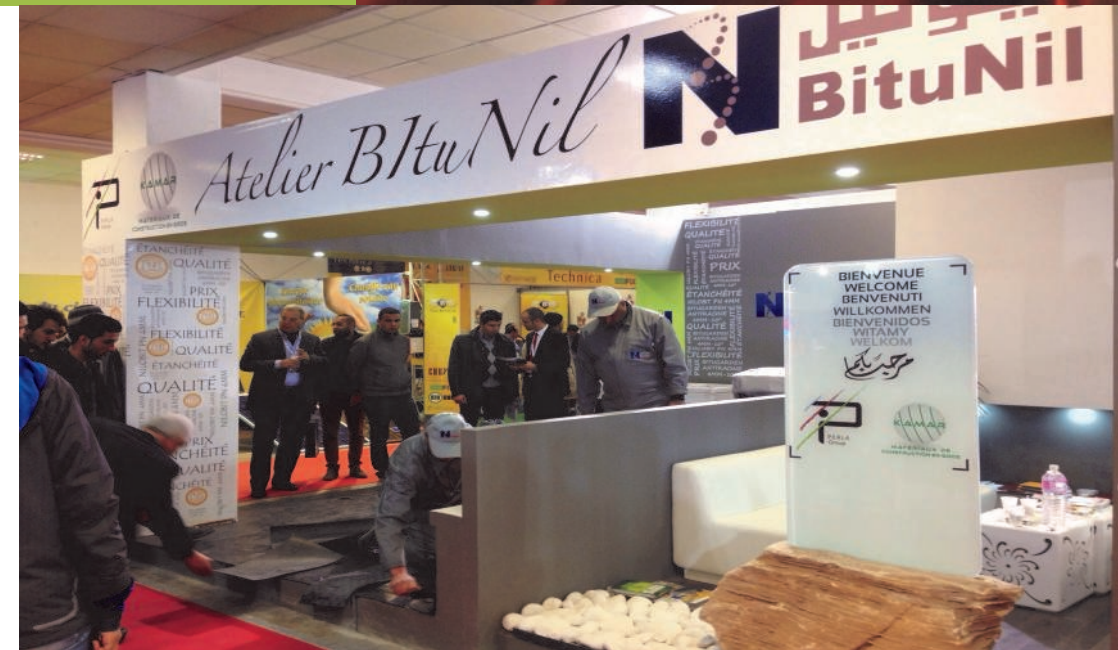
proofing membrane was protected with a protection board.



Pile caps were treated with cementitious waterproofing on top, and a swell water-stop around pile head perimeter.

The horizontal waterproofing system extended onto the pile heads to reach the reinforcing bars.

The basement was then ready to receive both raft foundation and structural walls.



MEDIBAT TUNISIA 2015

BituNil Participated in the Exhibition, held in SAFAX 4-7 March, along side its partners PERLA GROUP, one of its main distributors in the Tunisian Market. BituNil booth included a live demonstration of torching-on its waterproofing membranes. The live show attracted a lot of audience and attention and was repeated daily to include a new section of the stand area. A large fridge was on display

containing BituNil waterproofing membrane samples, kept at a temperature of -5°C. The samples were made available to visitors to examine first hand, and confirm its flexibility and resistance to cracking upon bending at such low temperature. The live interaction had a positive impact on participants, and the event was a complete success.



BituNil Supports its Distributors All Around Egypt

We fully support our distribution channel which extends to reach all Egypt governorates.

We reward our achieved distributor's efforts by providing decoration for their showrooms. We meet their needs by designing & supplying showroom signs, waterproofing systems posters, stands for products display, mini mock-ups, flyers, printed material, and brochures.



Mohamed Ali Hassan Store and Showroom
Al-Sharabiya

International Projects Using BituNil Products



Adhi Karya— La Maison
Indonesia



Exposed Steep Slope Roof
Uganda



Thi Cong
Vietnam

